

## **Wilkinson Rd between Interurban Rd and Helmcken**

**March 03, 2020 To March 06, 2020**



The data presented here is for information purposes only and should not be considered authoritative for construction, geotechnical, engineering, navigational, legal, or other site-specific uses. The information shared is owned by the Transportation Division of the Engineering Department at the District of Saanich. Accuracy is not guaranteed.

Start Date: 2-Mar-20  
 Start Time: 0:00  
 Station ID: M0041-02

**Location 1: Wilkinson Rd between Interurban Rd and Helmcken**

Note:

DATE:	March 2, 2020		March 3, 2020		March 4, 2020		March 5, 2020		March 6, 2020		WK AVG		WK AVG	HOURLY
	MON		TUE		WED		THURS		FRI				CH 1+2	%
Time:	EB	WB	EB	WB	EB	WB	EB	WB	EB	WB	EB	WB		
12-1 AM			32	31	30	50	24	44			29	42	70	0.4%
1-2 AM			19	11	19	20	14	16			17	16	33	0.2%
2-3 AM			19	18	22	4	21	12			21	11	32	0.2%
3-4 AM			18	17	26	17	40	16			28	17	45	0.3%
4-5 AM			82	20	76	22	84	29			81	24	104	0.6%
5-6 AM			279	62	262	72	252	84			264	73	337	1.9%
6-7 AM			643	282	666	276	674	256			661	271	932	5.3%
7-8 AM			635	514	664	454	656	481			652	483	1135	6.5%
8-9 AM			642	582	649	556	579	517			623	552	1175	6.7%
9-10 AM			597	523	581	552	573	563			584	546	1130	6.4%
10-11 AM			554	547	592	586	558	511			568	548	1116	6.4%
11-12 PM			586	551	593	586	578	519			586	552	1138	6.5%
12-1 PM			560	562	572	589	555	595			562	582	1144	6.5%
1-2 PM			580	619	600	601	581	598			587	606	1193	6.8%
2-3 PM			573	622	541	595	536	635			550	617	1167	6.7%
3-4 PM			587	629	547	670	492	622			542	640	1182	6.7%
4-5 PM			539	641	596	614	565	548			567	601	1168	6.7%
5-6 PM			527	587	555	585	523	574			535	582	1117	6.4%
6-7 PM			459	558	459	596	441	516			453	557	1010	5.8%
7-8 PM			340	437	367	419	342	404			350	420	770	4.4%
8-9 PM			298	334	301	352	286	377			295	354	649	3.7%
9-10 PM			213	241	182	262	205	287			200	263	463	2.6%
10-11 PM			116	146	145	149	125	137			129	144	273	1.6%
11-12 AM			63	91	81	78	73	83			72	84	156	0.9%
<b>LANES</b>			<b>8961</b>	<b>8625</b>	<b>9126</b>	<b>8705</b>	<b>8777</b>	<b>8424</b>			<b>8955</b>	<b>8585</b>	<b>17539</b>	<b>100.0%</b>
<b>TOTAL</b>			<b>17586</b>		<b>17831</b>		<b>17201</b>				<b>17540</b>			
	MON		TUE		WED		THURS		FRI		WK AVG			

PEAK HOUR					TOTAL VEHICALS-PEAK PERIODS		2 HOUR PEAK INTERVALS							
MAX. 7 - 9 am PEAK HOUR	1175	⇒	6.7%	between 8-9 AM	6876	⇒	6 HR TOTAL	<b>2 HR AM (7 - 9 AM)</b>						
MAX. 7 - 11 am PEAK HOUR	1175	⇒	6.7%	between 8-9 AM	4594	⇒	4 HR TOTAL	VEH / HR	VEH / 2HR	2 HR %				
								7-8 AM	1135	2310	13.2%			
								8-9 AM	1175					
MAX. 11 am - 1 pm PEAK HOUR	1144	⇒	6.5%	between 12-1 PM			<b>24 HOUR FACTORS</b>	<b>2 HR NOON (11 - 1 PM)</b>						
MAX. 11 am - 3 pm PEAK HOUR	1193	⇒	6.8%	between 1-2 PM				VEH / HR	VEH / 2HR	2 HR %				
MAX. 4 - 6 pm PEAK HOUR	1168	⇒	6.7%	between 4-5 PM			2.55	⇒	6-24 HR FACT.	11-12 PM	1138	2282	13.0%	
MAX. 3 - 6 pm PEAK HOUR	1182	⇒	6.7%	between 3-4 PM			3.82	⇒	4-24 HR FACT.	12-1 PM	1144			
										<b>2 HR PM (4 - 6 PM)</b>				
										VEH / HR	VEH / 2HR	2 HR %		
										4-5 PM	1168	2285	13.0%	
										5-6 PM	1117			

**Wilkinson Rd between Interurban Rd and Helmcken**

**Westbound**

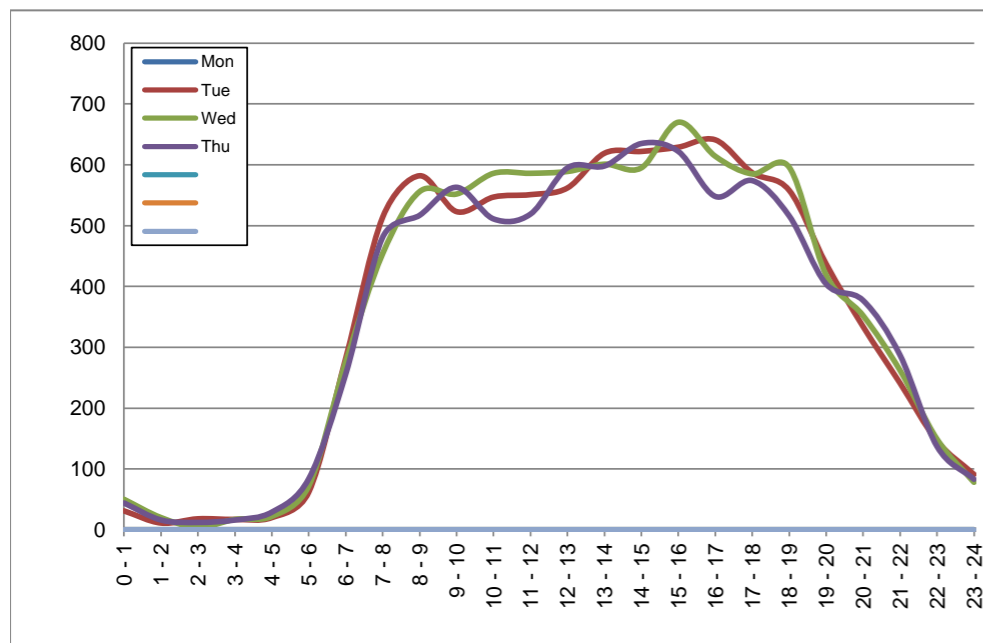
March 2, 2020 to March 5, 2020

**Hourly Volumes**

Time Period	Mon Mar 2	Tue Mar 3	Wed Mar 4	Thu Mar 5			
0 - 1		31	50	44			
1 - 2		11	20	16			
2 - 3		18	4	12			
3 - 4		17	17	16			
4 - 5		20	22	29			
5 - 6		62	72	84			
6 - 7		282	276	256			
7 - 8		514	454	481			
8 - 9		582	556	517			
9 - 10		523	552	563			
10 - 11		547	586	511			
11 - 12		551	586	519			
12 - 13		562	589	595			
13 - 14		619	601	598			
14 - 15		622	595	635			
15 - 16		629	670	622			
16 - 17		641	614	548			
17 - 18		587	585	574			
18 - 19		558	596	516			
19 - 20		437	419	404			
20 - 21		334	352	377			
21 - 22		241	262	287			
22 - 23		146	149	137			
23 - 24		91	78	83			
<b>Day Total</b>		<b>8625</b>	<b>8705</b>	<b>8424</b>			

**15-Minute Volumes**

Time Start	Mon Mar 2	Tue Mar 3	Wed Mar 4	Thu Mar 5				
0:00		11	14	15				
0:15		7	16	14				
0:30		8	13	9				
0:45		5	7	6				
1:00		7	4	5				
1:15		1	4	3				
1:30		2	5	4				
1:45		1	7	4				
2:00		7	0	3				
2:15		5	1	2				
2:30		5	2	3				
2:45		1	1	4				
3:00		2	6	4				
3:15		6	4	2				
3:30		6	5	7				
3:45		3	2	3				
4:00		6	4	5				
4:15		4	4	6				
4:30		1	8	7				
4:45		9	6	11				
5:00		13	9	13				
5:15		17	9	14				
5:30		13	20	18				
5:45		19	34	39				
6:00		44	45	42				
6:15		68	49	55				
6:30		79	91	80				
6:45		91	91	79				
7:00		120	114	120				
7:15		125	113	110				
7:30		133	108	110				
7:45		136	119	141				
8:00		141	141	135				
8:15		132	130	117				
8:30		148	132	135				
8:45		161	153	130				
9:00		139	126	145				
9:15		123	129	147				
9:30		130	152	141				
9:45		131	145	130				
10:00		139	145	118				
10:15		129	138	131				
10:30		134	140	126				
10:45		145	163	136				
11:00		125	144	129				
11:15		149	134	139				
11:30		133	167	128				
11:45		144	141	123				
12:00			146	143	166			
12:15			152	139	157			
12:30			129	157	147			
12:45			135	150	125			
13:00			148	146	153			
13:15			164	147	134			
13:30			159	160	151			
13:45			148	148	160			
14:00			138	141	149			
14:15			159	164	151			
14:30			164	131	170			
14:45			161	159	165			
15:00			161	170	167			
15:15			160	174	157			
15:30			165	160	163			
15:45			143	166	135			
16:00			158	152	132			
16:15			176	168	143			
16:30			155	144	138			
16:45			152	150	135			
17:00			152	135	128			
17:15			151	156	142			
17:30			135	143	140			
17:45			149	151	164			
18:00			144	157	138			
18:15			131	143	141			
18:30			148	153	131			
18:45			135	143	106			
19:00			113	146	137			
19:15			139	101	94			
19:30			102	101	92			
19:45			83	71	81			
20:00			77	87	108			
20:15			76	73	97			
20:30			89	97	77			
20:45			92	95	95			
21:00			74	85	89			
21:15			82	69	72			
21:30			42	61	69			
21:45			43	47	57			
22:00			46	41	34			
22:15			35	51	36			
22:30			36	30	32			
22:45			29	27	35			
23:00			29	26	26			
23:15			20	20	17			
23:30			12	12	21			
23:45			30	20	19			



Site notes:

# Wilkinson Rd between Interurban Rd and Helmcken

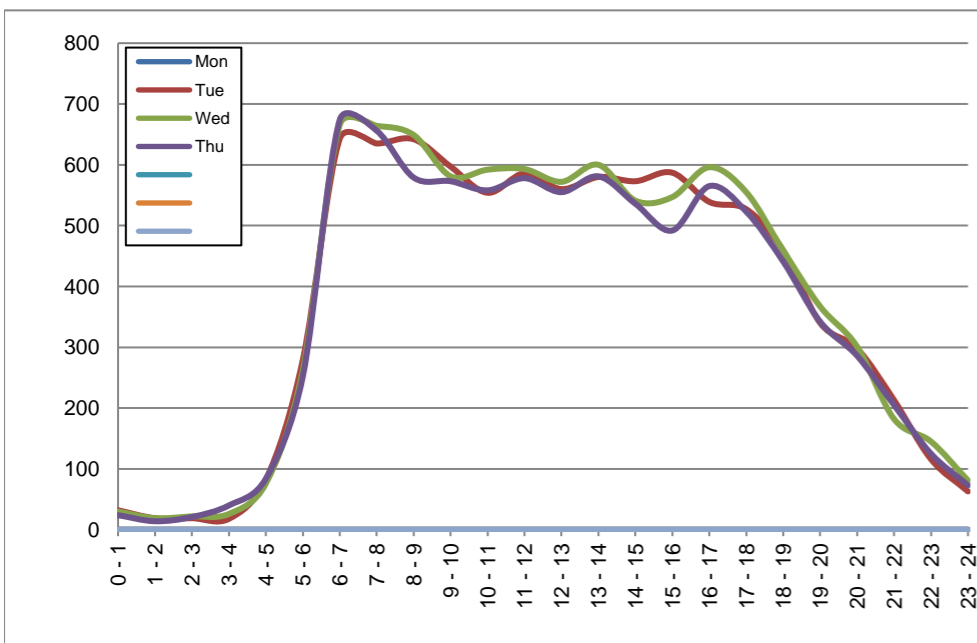
Eastbound  
March 2, 2020 to March 5, 2020

## Hourly Volumes

Time Period	Mon	Tue	Wed	Thu			
	Mar 2	Mar 3	Mar 4	Mar 5			
0 - 1		32	30	24			
1 - 2		19	19	14			
2 - 3		19	22	21			
3 - 4		18	26	40			
4 - 5		82	76	84			
5 - 6		279	262	252			
6 - 7		643	666	674			
7 - 8		635	664	656			
8 - 9		642	649	579			
9 - 10		597	581	573			
10 - 11		554	592	558			
11 - 12		586	593	578			
12 - 13		560	572	555			
13 - 14		580	600	581			
14 - 15		573	541	536			
15 - 16		587	547	492			
16 - 17		539	596	565			
17 - 18		527	555	523			
18 - 19		459	459	441			
19 - 20		340	367	342			
20 - 21		298	301	286			
21 - 22		213	182	205			
22 - 23		116	145	125			
23 - 24		63	81	73			
<b>Day Total</b>		<b>8961</b>	<b>9126</b>	<b>8777</b>			

## 15-Minute Volumes

Time Start	Mon	Tue	Wed	Thu				Time Start	Mon	Tue	Wed	Thu			
	Mar 2	Mar 3	Mar 4	Mar 5					Mar 2	Mar 3	Mar 4	Mar 5			
0:00		8	13	10				12:00		160	159	129			
0:15		5	8	8				12:15		129	147	139			
0:30		10	4	3				12:30		130	133	151			
0:45		9	5	3				12:45		141	133	136			
1:00		3	7	7				13:00		132	151	139			
1:15		8	5	2				13:15		146	133	161			
1:30		3	2	2				13:30		143	165	130			
1:45		5	5	3				13:45		159	151	151			
2:00		5	6	7				14:00		151	152	154			
2:15		6	8	8				14:15		144	134	122			
2:30		3	4	3				14:30		146	130	134			
2:45		5	4	3				14:45		132	125	126			
3:00		3	5	8				15:00		150	131	123			
3:15		4	7	10				15:15		147	145	111			
3:30		5	5	13				15:30		138	129	124			
3:45		6	9	9				15:45		152	142	134			
4:00		14	13	14				16:00		126	148	141			
4:15		29	25	24				16:15		140	133	133			
4:30		25	21	27				16:30		129	139	140			
4:45		14	17	19				16:45		144	176	151			
5:00		34	32	30				17:00		121	147	125			
5:15		41	51	43				17:15		112	171	130			
5:30		81	77	84				17:30		140	127	150			
5:45		123	102	95				17:45		154	110	118			
6:00		135	152	151				18:00		106	122	119			
6:15		171	183	176				18:15		122	115	121			
6:30		170	170	169				18:30		126	102	100			
6:45		167	161	178				18:45		105	120	101			
7:00		151	167	166				19:00		86	120	93			
7:15		164	166	171				19:15		82	88	98			
7:30		160	187	160				19:30		83	88	77			
7:45		160	144	159				19:45		89	71	74			
8:00		161	153	161				20:00		89	79	72			
8:15		163	165	142				20:15		85	77	79			
8:30		160	161	157				20:30		59	81	70			
8:45		158	170	119				20:45		65	64	65			
9:00		149	140	135				21:00		53	50	75			
9:15		139	132	139				21:15		66	47	52			
9:30		160	142	161				21:30		43	35	46			
9:45		149	167	138				21:45		51	50	32			
10:00		141	149	144				22:00		31	32	31			
10:15		171	168	159				22:15		32	45	33			
10:30		121	138	118				22:30		31	40	38			
10:45		121	137	137				22:45		22	28	23			
11:00		148	152	140				23:00		20	34	20			
11:15		149	128	127				23:15		18	19	19			
11:30		129	161	165				23:30		17	15	19			
11:45		160	152	146				23:45		8	13	15			



Site notes:

# Vehicle Speed Summary

Saanich Engineering Department

Count Id: [M0041-02](#)

Filename: [Wilkinson Rd between Interurban Rd and Helmcken-Feb-2020.xlsm](#)

**Location:** Wilkinson Rd between Interurban Rd and Helmcken

Note:

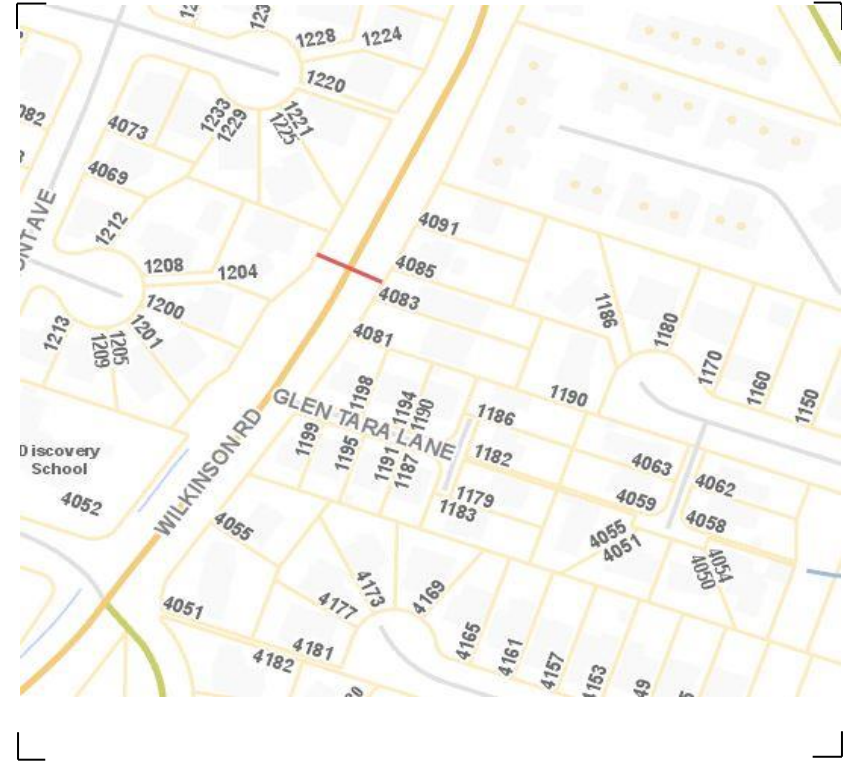
Direction: **East-West**

Dates: **March 03, 2020 To March 06, 2020**

*Filtered data*

AVG. SPEED	<b>28</b> mph	<b>45</b> km/h
50 % SPEED	<b>29</b> mph	<b>46</b> km/h
85 % SPEED	<b>36</b> mph	<b>57</b> km/h
95 % SPEED	<b>39</b> mph	<b>63</b> km/h

Location Map



**Wilkinson Rd between Interurban Rd and Helmcken**

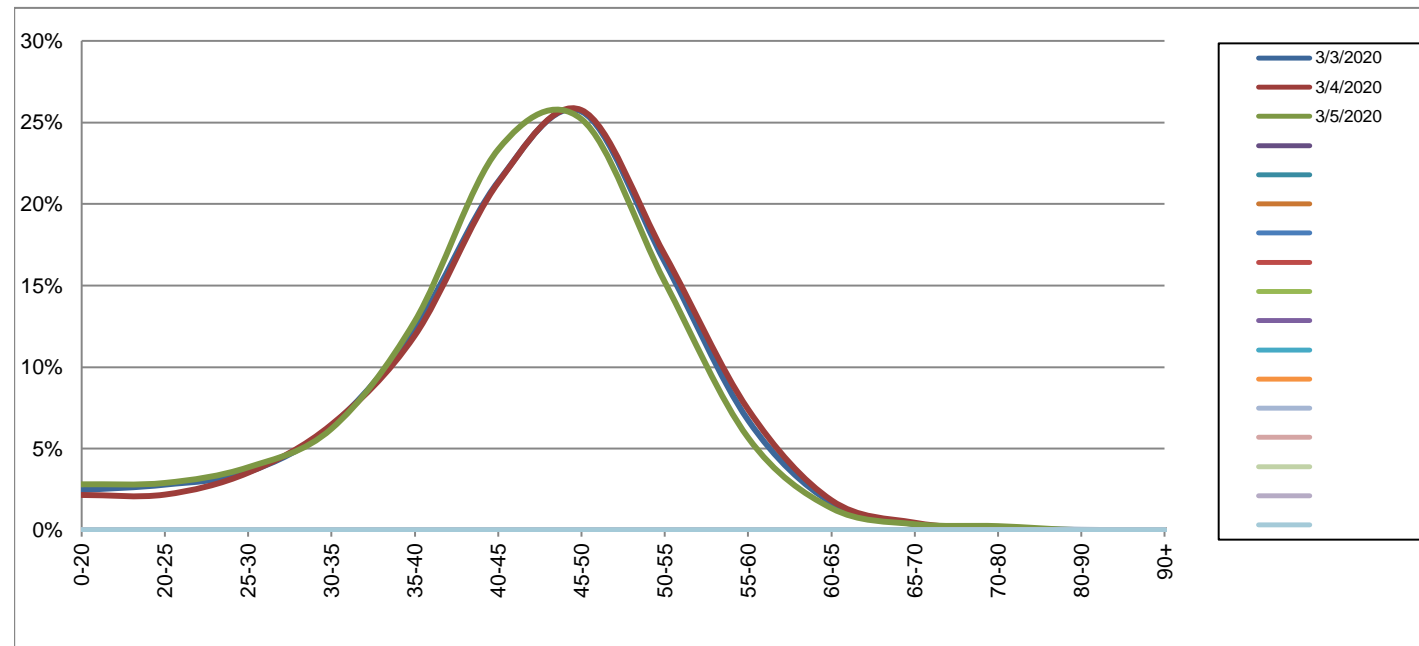
Westbound

March 3, 2020 to March 5, 2020

Daily Speed Bin Percentages															Daily Speed Bin Volumes														Total	Avg. Speed
Bin #	1	2	3	4	5	6	7	8	9	10	11	12	13	14	1	2	3	4	5	6	7	8	9	10	11	12	13	14		
Bin Speeds	0-20	20-25	25-30	30-35	35-40	40-45	45-50	50-55	55-60	60-65	65-70	70-80	80-90	90+	0-20	20-25	25-30	30-35	35-40	40-45	45-50	50-55	55-60	60-65	65-70	70-80	80-90	90+	Volume	Speed
3/3/2020	2.5%	2.8%	3.6%	6.4%	12.4%	21.4%	25.7%	16.4%	6.7%	1.7%	0.4%	0.1%	0.0%	0.0%	212	241	308	552	1066	1843	2214	1418	582	145	32	10	2	0	8625	44
3/4/2020	2.2%	2.2%	3.5%	6.5%	11.9%	21.3%	25.8%	16.9%	7.4%	1.8%	0.5%	0.0%	0.0%	0.0%	188	190	307	564	1039	1855	2242	1470	645	160	40	4	1	0	8705	44
3/5/2020	2.8%	2.9%	3.9%	6.2%	12.8%	23.3%	25.2%	15.2%	5.7%	1.4%	0.4%	0.2%	0.0%	0.0%	237	244	325	524	1079	1966	2123	1282	478	114	31	21	0	0	8424	43
<b>Total</b>	2.5%	2.6%	3.6%	6.4%	12.4%	22.0%	25.5%	16.2%	6.6%	1.6%	0.4%	0.1%	0.0%	0.0%	637	675	940	1640	3184	5664	6579	4170	1705	419	103	35	3	0	25754	44

**Speed Data Summary**

Bin #	1	2	3	4	5	6	7	8	9	10	11	12	13	14	Total
Bin Speeds	0-20	20-25	25-30	30-35	35-40	40-45	45-50	50-55	55-60	60-65	65-70	70-80	80-90	90+	
Survey Total	637	675	940	1640	3184	5664	6579	4170	1705	419	103	35	3	0	25754
% Total	2.5%	2.6%	3.6%	6.4%	12.4%	22.0%	25.5%	16.2%	6.6%	1.6%	0.4%	0.1%	0.0%	0.0%	100%
Accumulated %	2.5%	5.1%	8.7%	15.1%	27.5%	49.5%	75.0%	91.2%	97.8%	99.5%	99.9%	100.0%	100.0%	100%	
Inverse Accum. %	97.5%	94.9%	91.3%	84.9%	72.5%	50.5%	25.0%	8.8%	2.2%	0.5%	0.1%	0.0%	0.0%	0.0%	
Average Speed	44 KM/H														



Site notes:

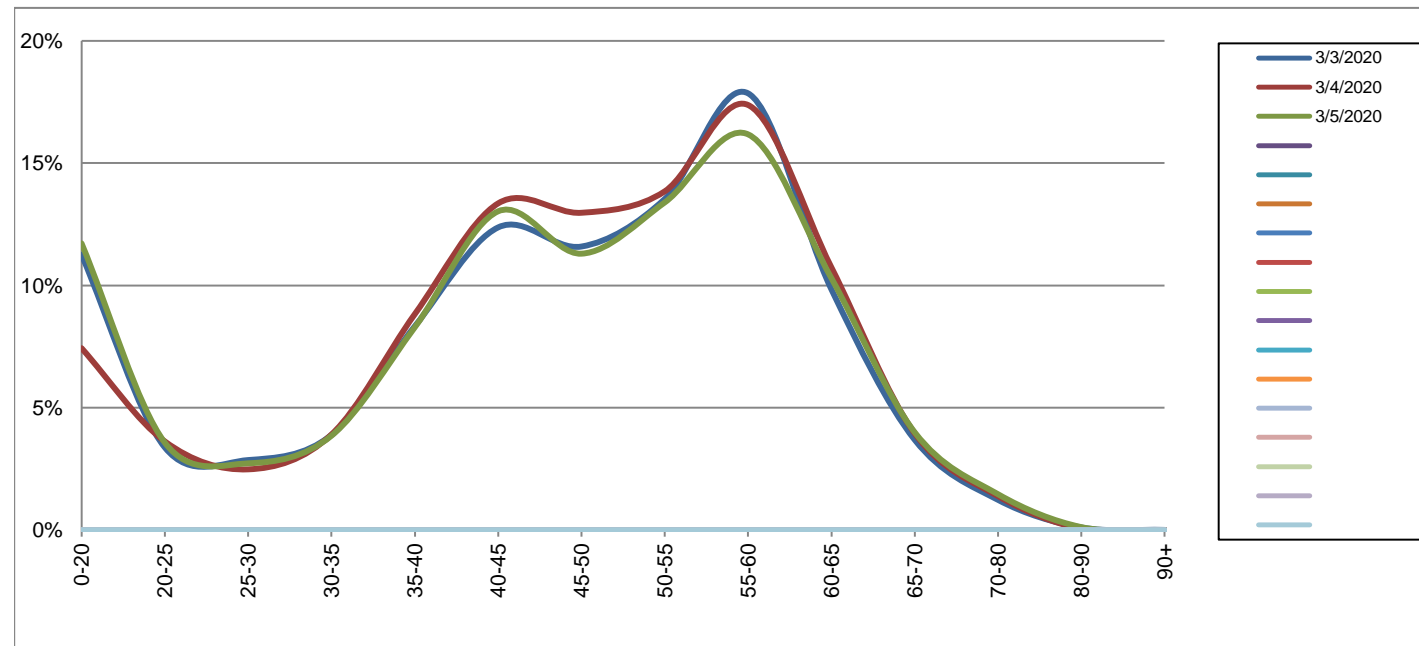
**Wilkinson Rd between Interurban Rd and Helmcken**

Eastbound  
March 3, 2020 to March 5, 2020

Daily Speed Bin Percentages															Daily Speed Bin Volumes														Total	Avg.
Bin #	1	2	3	4	5	6	7	8	9	10	11	12	13	14	1	2	3	4	5	6	7	8	9	10	11	12	13	14	Volume	Speed
Bin Speeds	0-20	20-25	25-30	30-35	35-40	40-45	45-50	50-55	55-60	60-65	65-70	70-80	80-90	90+	0-20	20-25	25-30	30-35	35-40	40-45	45-50	50-55	55-60	60-65	65-70	70-80	80-90	90+		
3/3/2020	11.3%	3.4%	2.9%	3.9%	8.3%	12.4%	11.6%	13.5%	17.9%	9.8%	3.7%	1.2%	0.1%	0.0%	1009	303	257	349	747	1109	1039	1213	1600	882	331	111	10	1	8961	45
3/4/2020	7.4%	3.6%	2.5%	3.9%	8.8%	13.4%	13.0%	13.9%	17.4%	10.7%	4.0%	1.4%	0.1%	0.0%	679	331	227	357	806	1219	1184	1264	1586	980	361	127	5	0	9126	46
3/5/2020	11.7%	3.6%	2.7%	3.9%	8.3%	13.0%	11.3%	13.4%	16.2%	10.3%	4.0%	1.5%	0.1%	0.0%	1029	314	240	339	728	1144	992	1176	1420	904	351	129	11	0	8777	45
<b>Total</b>	10.1%	3.5%	2.7%	3.9%	8.5%	12.9%	12.0%	13.6%	17.1%	10.3%	3.9%	1.4%	0.1%	0.0%	2717	948	724	1045	2281	3472	3215	3653	4606	2766	1043	367	26	1	26864	45

**Speed Data Summary**

Bin #	1	2	3	4	5	6	7	8	9	10	11	12	13	14	Total
Bin Speeds	0-20	20-25	25-30	30-35	35-40	40-45	45-50	50-55	55-60	60-65	65-70	70-80	80-90	90+	
Survey Total	2717	948	724	1045	2281	3472	3215	3653	4606	2766	1043	367	26	1	26864
% Total	10.1%	3.5%	2.7%	3.9%	8.5%	12.9%	12.0%	13.6%	17.1%	10.3%	3.9%	1.4%	0.1%	0.0%	100%
Accumulated %	10.1%	13.6%	16.3%	20.2%	28.7%	41.6%	53.6%	67.2%	84.4%	94.7%	98.5%	99.9%	100.0%	100%	
Inverse Accum. %	89.9%	86.4%	83.7%	79.8%	71.3%	58.4%	46.4%	32.8%	15.6%	5.3%	1.5%	0.1%	0.0%	0.0%	
Average Speed	45 KM/H														



Site notes:

**Wilkinson Rd between Interurban Rd and Helmcken**

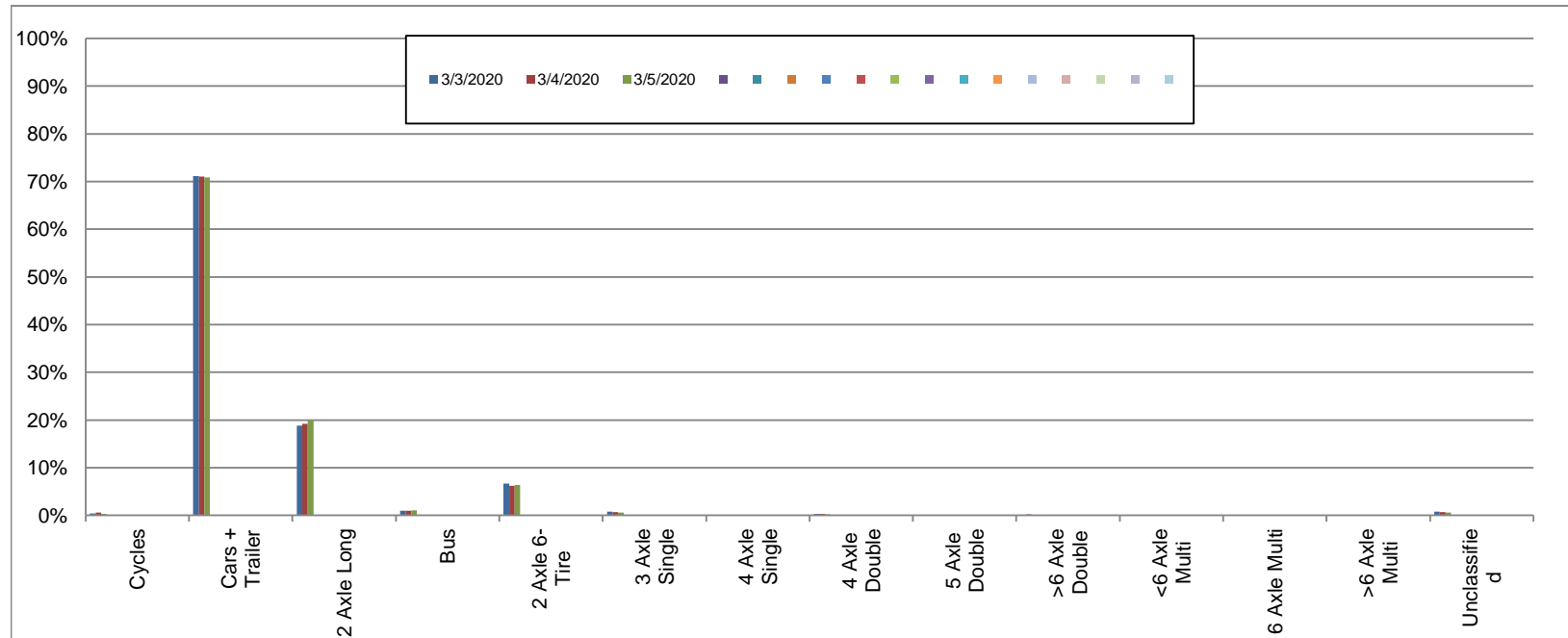
Westbound

March 3, 2020 to March 5, 2020

Daily Class Bin Percentages															Daily Class Bin Volumes											Total Volume			
Bin #	1	2	3	4	5	6	7	8	9	10	11	12	13	14	1	2	3	4	5	6	7	8	9	10	11		12	13	14
Bin Class	Cycles	Cars + Trailer	2 Axle Long	Bus	2 Axle 6-Tire	3 Axle Single	4 Axle Single	4 Axle Double	5 Axle Double	>6 Axle Double	<6 Axle Multi	6 Axle Multi	>6 Axle Multi	Unclassified	Cycles	Cars + Trailer	2 Axle Long	Bus	2 Axle 6-Tire	3 Axle Single	4 Axle Single	4 Axle Double	5 Axle Double	>6 Axle Double	<6 Axle Multi	6 Axle Multi	>6 Axle Multi	Unclassified	
3/3/2020	0.4%	71.1%	18.8%	0.9%	6.7%	0.8%	0.0%	0.3%	0.0%	0.2%	0.0%	0.0%	0.0%	0.8%	31	6132	1624	81	574	66	3	29	4	13	0	0	0	68	8625
3/4/2020	0.5%	71.1%	19.2%	1.0%	6.2%	0.7%	0.0%	0.3%	0.1%	0.2%	0.0%	0.0%	0.0%	0.6%	47	6186	1671	88	540	62	3	26	9	16	0	0	1	56	8705
3/5/2020	0.3%	70.9%	19.8%	1.1%	6.4%	0.6%	0.0%	0.2%	0.1%	0.1%	0.0%	0.0%	0.0%	0.5%	27	5969	1670	93	535	47	0	19	5	12	0	0	1	46	8424
<b>Total</b>	0.4%	71.0%	19.3%	1.0%	6.4%	0.7%	0.0%	0.3%	0.1%	0.2%	0.0%	0.0%	0.0%	0.7%	105	18287	4965	262	1649	175	6	74	18	41	0	0	2	170	25754

**Class Data Summary**

Bin #	1	2	3	4	5	6	7	8	9	10	11	12	13	14	Total Volume
Bin Class	Cycles	Cars + Trailer	2 Axle Long	Bus	2 Axle 6-Tire	3 Axle Single	4 Axle Single	4 Axle Double	5 Axle Double	>6 Axle Double	<6 Axle Multi	6 Axle Multi	>6 Axle Multi	Unclassified	Total Volume
<b>Survey Total</b>	105	18287	4965	262	1649	175	6	74	18	41	0	0	2	170	25754
<b>% Total</b>	0.4%	71.0%	19.3%	1.0%	6.4%	0.7%	0.0%	0.3%	0.1%	0.2%	0.0%	0.0%	0.0%	0.7%	100%
<b>Accumulated %</b>	0.4%	71.4%	90.7%	91.7%	98.1%	98.8%	98.8%	99.1%	99.2%	99.3%	99.3%	99.3%	99.3%	100.0%	
<b>Inv. Accum. %</b>	99.6%	28.6%	9.3%	8.3%	1.9%	1.2%	1.2%	0.9%	0.8%	0.7%	0.7%	0.7%	0.7%	0.0%	



**Classification Descriptions**

Bin #	Bin Description
1	Motorcycles
2	Passenger cars, including those with recreational trailers
3	2-axle pick-ups, vans, and RVs, including those with recreational trailers
4	Buses
5	2-axle, 6-tire single units
6	3-axle single units
7	4-axle single units
8	3-axle or 4-axle double unit
9	5-axle double unit
10	6-, 7-, or 8-axle double unit
11	5-axle multiple unit
12	6-axle multiple unit
13	7-or-more-axle multiple unit
14	Vehicles that could not be classified

Site notes:



**Wilkinson Rd between Interurban Rd and Helmcken**

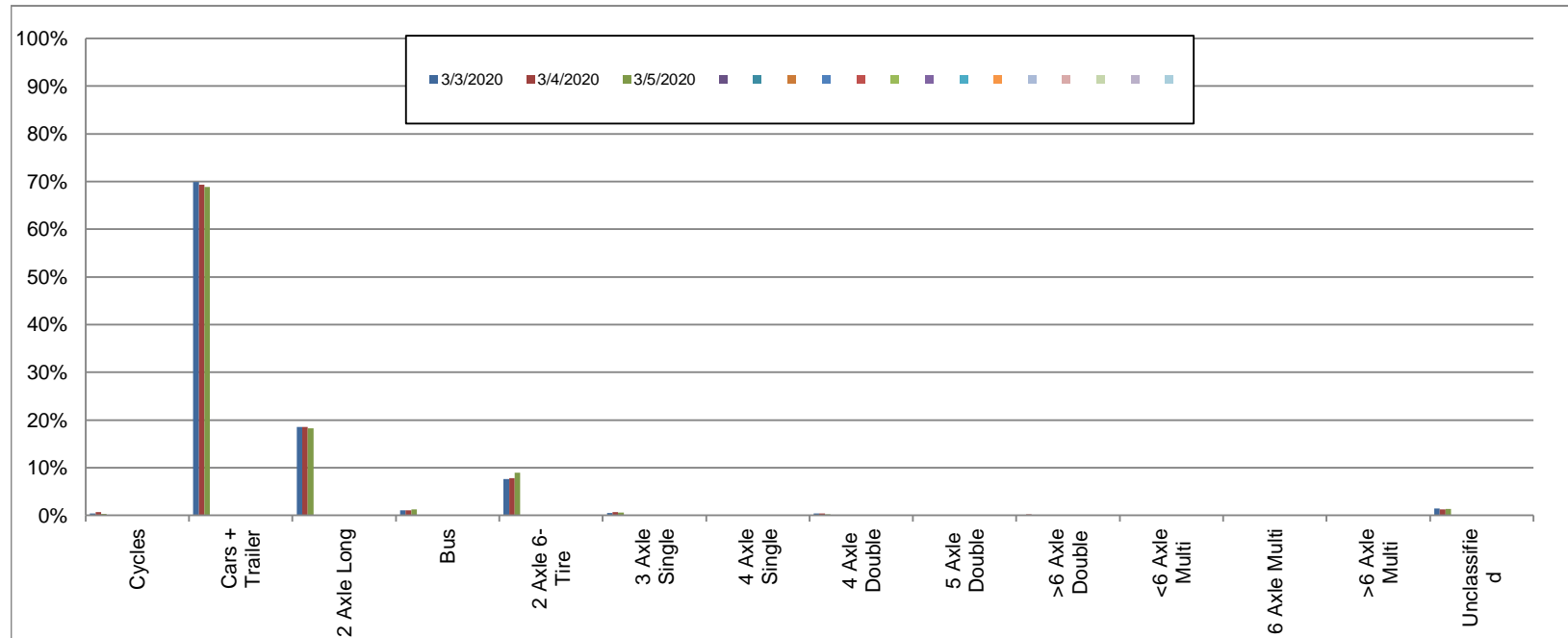
Eastbound

March 3, 2020 to March 5, 2020

Daily Class Bin Percentages															Daily Class Bin Volumes														
Bin #	1	2	3	4	5	6	7	8	9	10	11	12	13	14	1	2	3	4	5	6	7	8	9	10	11	12	13	14	Total Volume
Bin Class	Cycles	Cars + Trailer	2 Axle Long	Bus	2 Axle 6-Tire	3 Axle Single	4 Axle Single	4 Axle Double	5 Axle Double	>6 Axle Double	<6 Axle Multi	6 Axle Multi	>6 Axle Multi	Unclassified	Cycles	Cars + Trailer	2 Axle Long	Bus	2 Axle 6-Tire	3 Axle Single	4 Axle Single	4 Axle Double	5 Axle Double	>6 Axle Double	<6 Axle Multi	6 Axle Multi	>6 Axle Multi	Unclassified	
3/3/2020	0.4%	69.9%	18.6%	1.0%	7.6%	0.5%	0.0%	0.4%	0.0%	0.1%	0.0%	0.0%	0.0%	1.4%	32	6267	1665	92	684	46	3	32	3	10	0	0	0	127	8961
3/4/2020	0.7%	69.4%	18.5%	1.1%	7.8%	0.6%	0.1%	0.4%	0.0%	0.2%	0.0%	0.0%	0.0%	1.2%	61	6331	1691	97	715	58	8	34	3	16	0	0	2	110	9126
3/5/2020	0.3%	68.9%	18.3%	1.2%	8.9%	0.6%	0.1%	0.2%	0.1%	0.1%	0.0%	0.0%	0.0%	1.4%	30	6045	1604	106	782	50	5	17	6	9	0	0	1	122	8777
<b>Total</b>	<b>0.5%</b>	<b>69.4%</b>	<b>18.5%</b>	<b>1.1%</b>	<b>8.1%</b>	<b>0.6%</b>	<b>0.1%</b>	<b>0.3%</b>	<b>0.0%</b>	<b>0.1%</b>	<b>0.0%</b>	<b>0.0%</b>	<b>0.0%</b>	<b>1.3%</b>	<b>123</b>	<b>18643</b>	<b>4960</b>	<b>295</b>	<b>2181</b>	<b>154</b>	<b>16</b>	<b>83</b>	<b>12</b>	<b>35</b>	<b>0</b>	<b>0</b>	<b>3</b>	<b>359</b>	<b>26864</b>

**Class Data Summary**

Bin #	1	2	3	4	5	6	7	8	9	10	11	12	13	14	Total Volume
Bin Class	Cycles	Cars + Trailer	2 Axle Long	Bus	2 Axle 6-Tire	3 Axle Single	4 Axle Single	4 Axle Double	5 Axle Double	>6 Axle Double	<6 Axle Multi	6 Axle Multi	>6 Axle Multi	Unclassified	Total Volume
<b>Survey Total</b>	123	18643	4960	295	2181	154	16	83	12	35	0	0	3	359	26864
<b>% Total</b>	0.5%	69.4%	18.5%	1.1%	8.1%	0.6%	0.1%	0.3%	0.0%	0.1%	0.0%	0.0%	0.0%	1.3%	100%
<b>Accumulated %</b>	0.5%	69.9%	88.3%	89.4%	97.5%	98.1%	98.2%	98.5%	98.5%	98.7%	98.7%	98.7%	98.7%	100.0%	
<b>Inv. Accum. %</b>	99.5%	30.1%	11.7%	10.6%	2.5%	1.9%	1.8%	1.5%	1.5%	1.3%	1.3%	1.3%	1.3%	0.0%	



**Classification Descriptions**

Bin #	Bin Description
1	Motorcycles
2	Passenger cars, including those with recreational trailers
3	2-axle pick-ups, vans, and RVs, including those with recreational trailers
4	Buses
5	2-axle, 6-tire single units
6	3-axle single units
7	4-axle single units
8	3-axle or 4-axle double unit
9	5-axle double unit
10	6-, 7-, or 8-axle double unit
11	5-axle multiple unit
12	6-axle multiple unit
13	7-or-more-axle multiple unit
14	Vehicles that could not be classified

Site notes: